

PLUMBING TOOL PRODUCT LINE

Over 40 essential plumbing tools – many with features you won't find anywhere else.



Who we are



Prime-Line Products has been supplying repair and replacement parts for windows and doors since 1978. Over 40 years of business acumen has led Prime-Line to the top of its trade. The worldwide need for residential maintenance has motivated our company to develop thousands of unique items for our customers. We service the professional trades with repair solutions throughout North America and abroad.

We also provide products to the Do-It-Yourself industry through home centers, hardware stores and lumber yards, with a wide variety of specialized repair parts that fit various individual and regional demands. We currently supply many manufacturers with OEM components that are in wide demand.

Customer Service

Prime-Line is ready to fulfill any large capacity order, we can take your order from inception to completion in stride. With customer service available from 6 A.M. to 5 P.M. PST every weekday, you'll get the answers you want, when you want them.

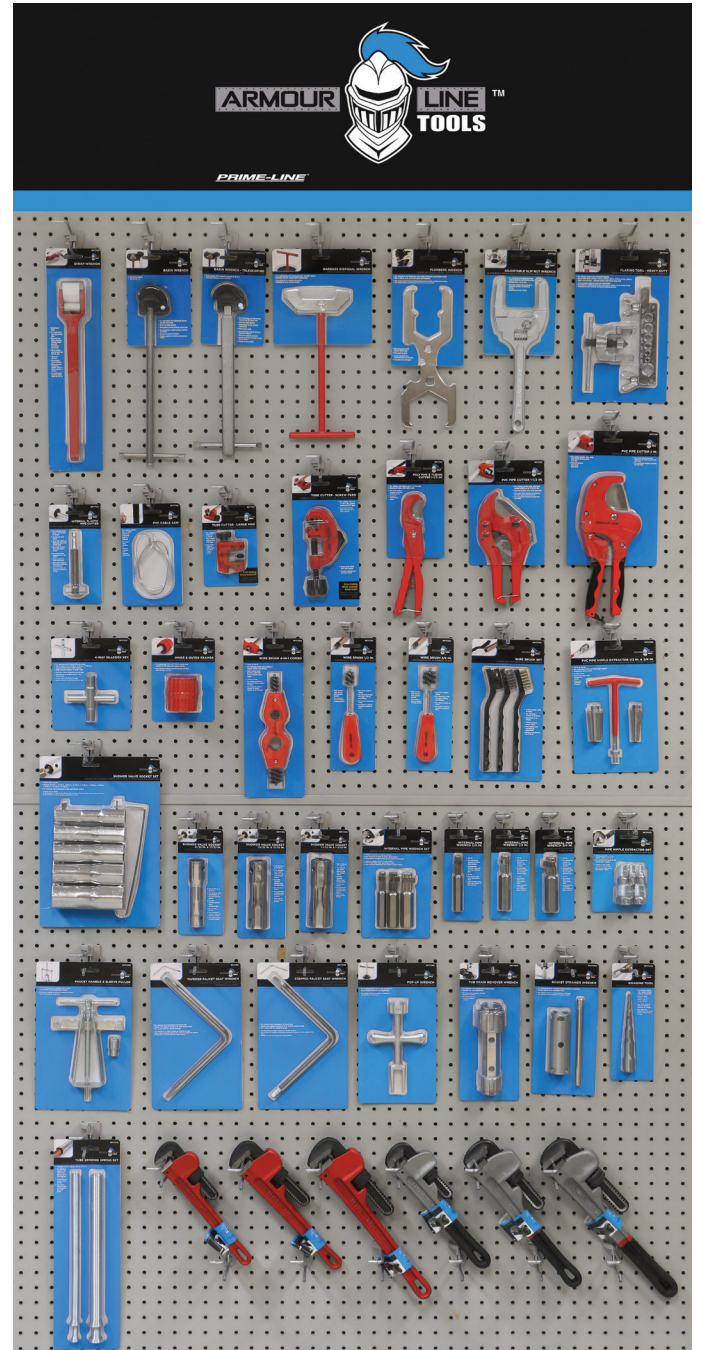
For further information, please contact us directly:

26950 San Bernardino Ave.,
Redlands, CA 92374

800.255.3505
primeline.net

PLUMBING TOOL PRODUCT LINE

- » Extensive quality plumbing tool line of over 40 items and expanding!
- » Full color retail packaging complete with:
 - » Gloss color sandwich style card packaging
 - » Upgraded form-fit tool dedicated blisters
 - » Product details and color product photos
 - » Bilingual - English and Spanish
 - » Line drawings and instructions
- » Providing a positive and informative consumer buying experience!
- » Add to existing program or build a new program!
- » Clean and consistent planogram look!
- » Many tools feature enhancements not found on competitor merchandise.





TUBE CUTTER - LARGE MINI

RP77111

- For cutting 1/8 in. to 1-1/8 in. dia. copper tubing and PVC pipe

» Extra Cutting Wheel Included!



PVC PIPE CUTTER 1-1/2 IN.

RP77151

- For cutting plastic pipe, vinyl and rubber tubing up to 1-1/2 in. dia.

» Ratcheting Mechanism!
» Avoid Slipping!



TUBE CUTTER - SCREW FEED

RP77112

- For cutting 1/8 in. to 1-1/8 in. dia. copper tubing and PVC pipe

» Extra Cutting Wheel Included Inside Knob!



PVC PIPE CUTTER 2 IN.

RP77152

- For cutting plastic pipe, vinyl and rubber tubing up to 2 in. dia.

» Ratcheting Mechanism!
» Avoid Slipping!



POLY PIPE & TUBING CUTTER 1-1/2 IN.

RP77131

- For cutting soft tubing up to 1-1/2 in. dia.

» Opens Wide!



PVC CABLE SAW

RP77155

- For cutting plastic pipe in tight spaces or irrigation pipe in ground

» Larger Finger Loops for Better Grip!
» Tight Weave Cable!



INTERNAL PLASTIC PIPE CUTTER

RP77171

- For cutting plastic pipe 1-1/4 in. dia. or larger

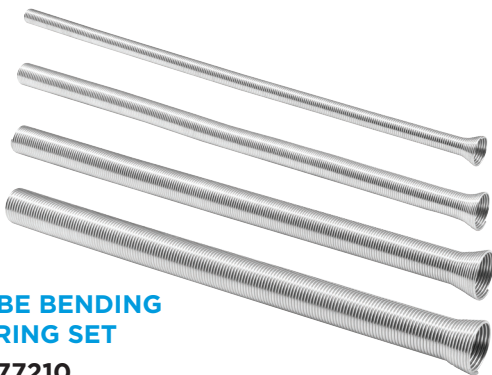
» Cutter Blade Securely Attached

FAUCET HANDLE & SLEEVE PULLER

RP77233

- For removing faucet handles with center screw holes and compression sleeve

» Full Pattern "T" Cross Bar



TUBE BENDING SPRING SET

RP77210

- For bending copper and soft metal tubing up to 180 degrees
- 4 Pieces (1/4 in., 3/8 in., 1/2 in., 5/8 in.)

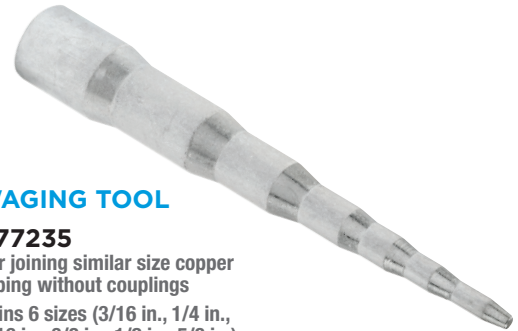
» Tight Spring Coils
» Maintains Shape

SWAGING TOOL

RP77235

- For joining similar size copper tubing without couplings
- Joins 6 sizes (3/16 in., 1/4 in., 5/16 in., 3/8 in., 1/2 in., 5/8 in.)

» Solid Steel Construction



4-WAY SILLCOCK KEY

RP77231

- For opening and closing sillcock valves
- Fits 4 sizes (1/4 in., 9/32 in., 5/16 in., 11/32 in.)

» Larger Profile for Ease of Application

FLARING TOOL HEAVY DUTY

RP77237

- For flaring copper and soft metal tubing
- Fits 7 tube sizes (3/16 in., 1/4 in., 5/16 in., 3/8 in., 7/16 in., 1/2 in., 5/8 in.)

» Heavy Duty Construction!
» Oversized Wing Nuts & Precision Hole Alignment





WIRE BRUSH SET

RP77250

- For cleaning a variety of surfaces
- 3 Piece (nylon, steel & brass)

» Durable Plastic Handle



INNER & OUTER REAMER

RP77271

- For preparing 1/8 in. to 1-5/8 in. inside and outside of PVC pipe and copper tubing

» Durable Plastic Housing



WIRE BRUSH

RP77261 - 1/2 IN.
RP77262 - 3/4 IN.

- For cleaning inside of copper tubing and fittings

» Wire Frame Around Durable Plastic Insert Handle



SHOWER VALVE SOCKET SET

RP77310

- For removal and installation of tub and shower valves
- 5 Piece plus handle
- 10 Sizes (21/32 in., 27/32 in., 29/32 in., 31/32 in., 1-1/32 in., 1-3/32 in., 1-5/32 in., 1-9/32 in., 1-11/32 in., 1-7/16 in.)

» Full Pattern Heavy Gauge Sockets



WIRE BRUSH 4-IN-1 COMBO

RP77265

- For cleaning inside and outside of copper tubing and fittings
- 1/2 in. & 3/4 in.

» Durable Plastic Housing

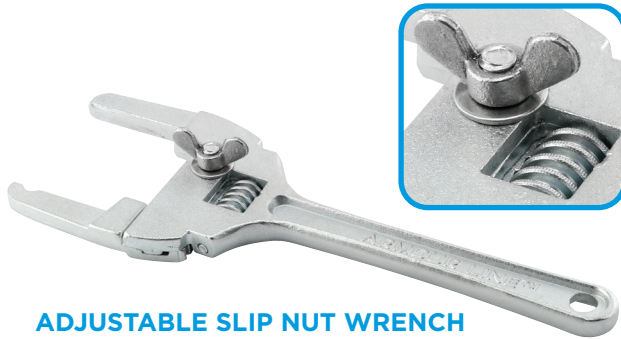


SHOWER VALVE SOCKET

RP77311 - 21/32 IN. & 27/32 IN.
RP77312 - 29/32 IN. & 31/32 IN.
RP77313 - 1-1/32 IN. & 1-3/32 IN.

- For removal and installation of tub and shower valves

» Full Pattern Heavy Gauge Sockets

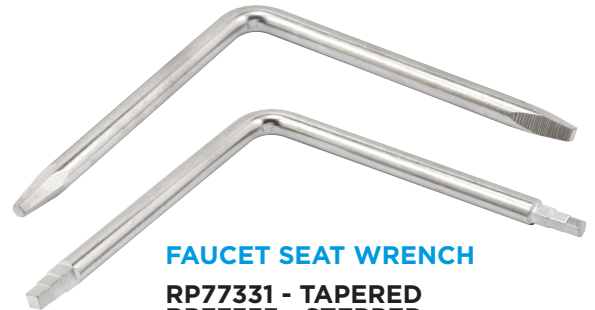


ADJUSTABLE SLIP NUT WRENCH

RP77321

- For removing and tightening nuts under bathroom and kitchen sinks
- Adjusts from 1 in. to 3 in.

» Larger Wing Nut
» Additional Turn Wheel Threads for Better Operation



FAUCET SEAT WRENCH

RP77331 - TAPERED RP77333 - STEPPED

- For removal and installation of faucet seat

» Deeper Milled Taper & Steps
» Fits Snug in Seats

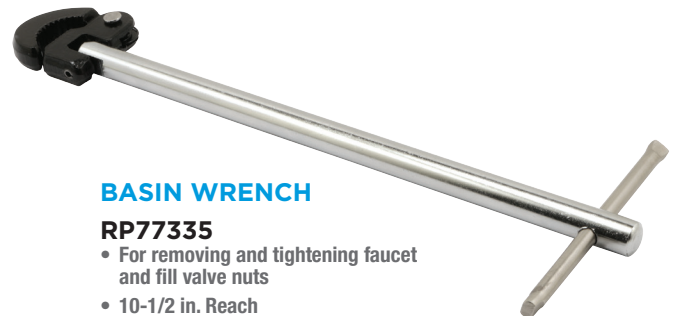


TUB DRAIN REMOVER WRENCH

RP77323

- For removal and installation of tub drains

» Heavy Duty Construction



BASIN WRENCH

RP77335

- For removing and tightening faucet and fill valve nuts
- 10-1/2 in. Reach

» Cast Swivel Head
» Steel Bar Handle Will Not Slide Out

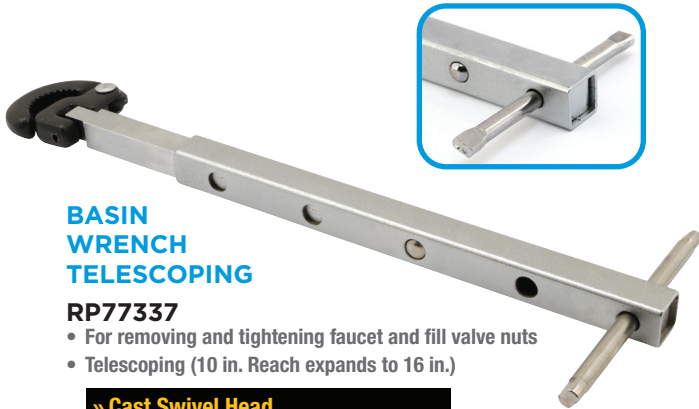


POP-UP WRENCH

RP77325

- For holding pop-up and drain strainers in place during removal and installation

» Cast Body
» Distinctive Heads

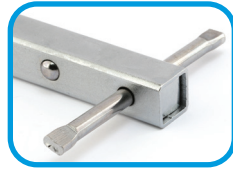


**BASIN
WRENCH
TELESCOPING**

RP77337

- For removing and tightening faucet and fill valve nuts
- Telescoping (10 in. Reach expands to 16 in.)

- » Cast Swivel Head
- » Steel End Core Construction
- » Steel Bar Handle will not Slide Out

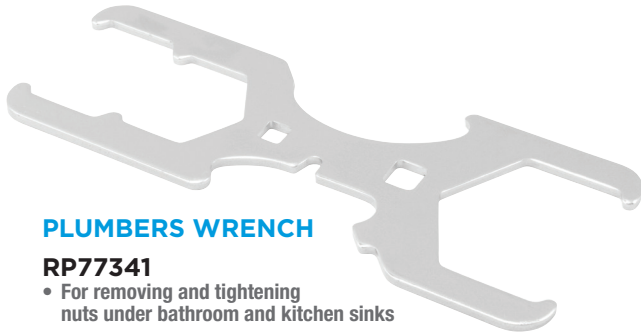


GARBAGE DISPOSAL WRENCH

RP77345

- For unblocking and freeing jammed shredder plates

- » Large "T" Handle for Better Centered Leverage



PLUMBERS WRENCH

RP77341

- For removing and tightening nuts under bathroom and kitchen sinks
- Fits 1-3/4 in., 2 in., 2-1/2 in. spud and locknuts

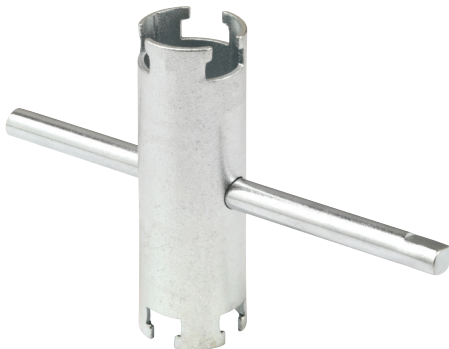
- » Sides Designed to Fit Plastic Drain Nuts

PVC PIPE NIPPLE EXTRACTOR

RP77350

- For removing broken sprinkler pipe nipples
- 1/2 in. & 3/4 in.

- » Dual Heads Supplied
- » Easy Swap Out



BASKET STRAINER WRENCH

RP77343

- For holding basket strainers in place during installation

- » Full Pattern with Steel Bar Handle



PIPE NIPPLE EXTRACTOR SET

RP77355

- For removing broken & old frozen pipe nipples
- 5 Pieces (1/8 in., 1/4 in., 3/8 in., 1/2 in., 3/4 in.)

» Deep Grooves Provide Tighter Fit



INTERNAL PIPE WRENCH

RP77360 - COMPLETE 3 PIECE SET

RP77361 - 3/8 IN.

RP77362 - 1/2 IN.

RP77363 - 3/4 IN.

- For removing broken & frozen pipe nipples

» Deep Grooves & Cams to Avoid Slippage



PIPE WRENCH - IRON

RP77371 - 10 IN.

RP77372 - 12 IN.

RP77373 - 14 IN.

- Heavy duty construction
- Jaws open up to:
 - 10 in. - 1-1/2 in.
 - 12 in. - 2-1/8 in.
 - 14 in. - 2-1/2 in.

» Cast Iron Head with Deep Groove Jaws



PIPE WRENCH - ALUMINUM

RP77381 - 10 IN.

RP77382 - 12 IN.

RP77383 - 14 IN.

- Heavy duty construction
- Jaws open up to:
 - 10 in. - 1-1/2 in.
 - 12 in. - 2-1/8 in.
 - 14 in. - 2-1/2 in.

» Light Weight Handle

» Cast Iron Head with Deep Groove Jaws



STRAP WRENCH

RP77391

- For loosening and tightening pipe
- Aluminum body

» Light Weight Handle

» Extra Long Strap

ADDITIONAL ITEMS COMING SOON!

Innovative!
**Easy & Quick
Blade Swap Out!**



PLUMBING 2-IN-1 UTILITY KNIFE & SAW

- Includes 1 utility blade and 1 saw blade
- 5 Additional utility blades inside handle!
- Designed to fit standard utility and saw blades
- Great for cutting plastic tubing



MINI HACKSAW

- Includes extra blade



PLUMBING PLIERS WITH REMOVABLE PLASTIC JAW COVERS

- Includes two sets of jaw covers
- Jaw covers help protect special finish tubing



CLOSE QUARTER COPPER TUBING CUTTERS

- 1/2 in., 3/4 in., and 1 in. sizes



SWIVEL DEBURRING TOOL

- Includes extra blade inside handle
- Great for copper and PVC
- Easy and quick blade swap out

PRIME-LINE®

26950 San Bernardino Ave., Redlands, CA 92374
(800) 255-3505 • FAX: (909) 880-2906
Web: primeline.net

ZZ 517 (9-22)

