



**PL** PRIME-LINE<sup>®</sup>

**AT** Amesbury Truth<sup>™</sup>  
Window Hardware

## Who we are



Prime-Line Products has been supplying repair and replacement parts for windows and doors since 1978. Over 40 years of business acumen has led Prime-Line to the top of its trade. The worldwide need for residential maintenance has motivated our company to develop thousands of unique items for our customers. We service the professional trades with repair solutions throughout North America and abroad.

We also provide products to the Do-It-Yourself industry through home centers, hardware stores and lumber yards, with a wide variety of specialized repair parts that fit various individual and regional demands. We currently supply many manufacturers with OEM components that are in wide demand.

### Customer Service

Prime-Line is ready to fulfill any large capacity order, we can take your order from inception to completion in stride. With customer service available from 6 A.M. to 5 P.M. PST every weekday, you'll get the answers you want, when you want them.

### For further information, please contact us directly:

26950 San Bernardino Ave.,  
Redlands, CA 92374

800.255.3505  
[primeline.net](http://primeline.net)

### Our value proposition

- Extensive product assortment
- Competitive wholesale pricing
- Largest selection of current and hard-to-find hardware
- In stock, ready to ship inventory
- Nationwide coverage
- Outstanding customer service
- Personalized account management
- State of the art ordering systems

### What we offer

- E-business capability
- In-house creative services available
- Shipping nationwide or international
- Engineering capability with 3-D rendering
- 3-D printer model making capability
- QC department and cycle testing
- Multiple roll-forming capabilities
- Metal fabrication shop

### How we can help

- Order fulfillment services include pick, pack and ship
- Order assembly and palletization
- EDI, ASN generation
- Prepacking & promotional packing
- Product storage & warehousing
- Inventory and labeling
- Cross-dock capabilities





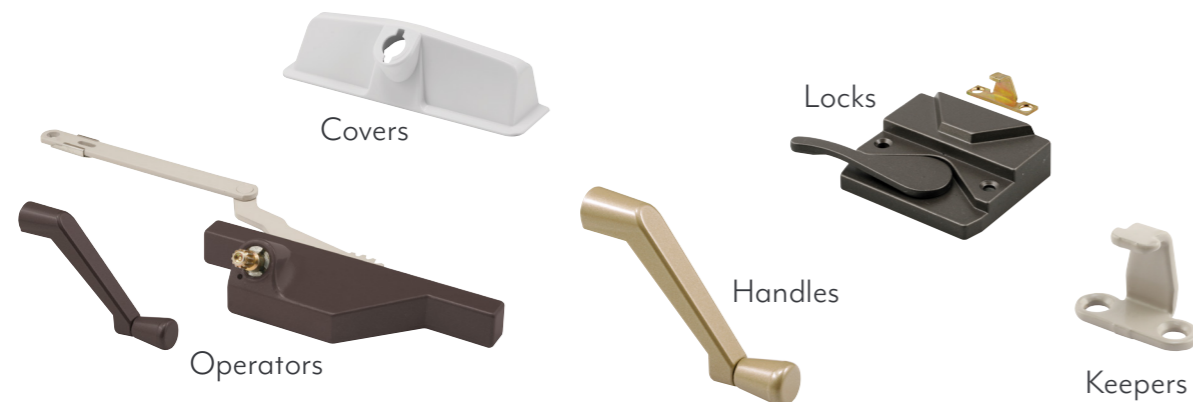
**TRUTH HARDWARE** is the largest manufacturer of awning & casement window hardware in North America. They also produce a large variety of sash, double hung & slider window locks. Most **TRUTH HARDWARE** is clearly marked with the “**TRUTH**” name etched or molded into the various parts. All **TRUTH** products are manufactured in the U.S.A. to the highest standards of quality and craftsmanship.

**Finishes in stock:**

- Brite white • Bronze • Clay • Coppertone • Gold • White • “E-GARD” finish\*

\* “E-GARD” finish, where specified, refers to a 3 step electroplating process designed to protect both steel and zinc parts from corrosion.

- Numbers stamped or cast into **TRUTH** products do not denote the corresponding **TRUTH** part numbers.
- **CASEMENT AND AWNING WINDOW OPERATORS:** The operators and finishes currently in stock are the most popular, however, a variety of other sizes, styles and finishes are available on special order.
- **OPERATOR COVERS** are available in both plastic and diecast versions. Use on “**ENTRYGARD**” operators only.
- **FOLDING CRANK HANDLE:** This product replaces crank or “T” handles. When folded this crank handle offers a lower profile than a “T” handle. This eliminates interference with window coverings (especially vertical and mini blinds). When lifted to the operating position it allows easier operation and less torque when opening window.
- All **CRANK HANDLES** fit 11/32” spindles only.
- **WINDOW LOCKS** are available in many styles for various windows. This includes casement, awning, slider and double hung windows. We carry the most popular models but can special order others when required.
- **KEEPERS** are supplied with all window locks and may be ordered separately.



**HINGES:**

- **Standard Duty 4 Bar:** Steel construction (Zinc Plated) with stops. Used on both awning and casement windows, non-handed.
- **Awning:** Must order by the pair (left & right hand).
- **Concealed Casement:** Flat bottom stainless steel track with “Delrin” shoe slide and steel support arms. Supplied with 90° stop device to limit window opening and to protect operator.



The following Window Manufacturers are just a few of those using this type of hardware:

- American Craftsmen
- Better-Bilt
- Caradco
- Caradco (Illinois)
- Champion
- Crestline
- Crystal
- D7
- Gentek
- Homestead
- Marvin
- Milgard
- Northeast
- Peach Tree
- Pella
- Phillips
- Royal Pine
- Solar
- Viking
- and Others

• Contact Customer Service for special requirements or quotations: 800.255.3505



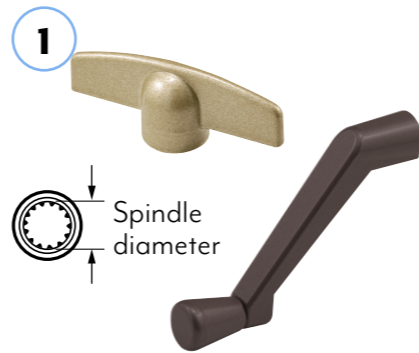
Amesbury Truth have been designing and manufacturing window & door hardware since 1955, and offers a complete line of hinges, locks, and operators. For use on wood, vinyl, metal and fiberglass windows.

*“It is important that all windows function properly in case of an emergency.”*

**Uses:** There is a wide variety of window styles on the market and all require some type of hardware to function. Most of these hardware components wear out over time and require repair and replacement. It is important that all windows function properly in case of an emergency escape event occurs such as a fire or natural disaster.

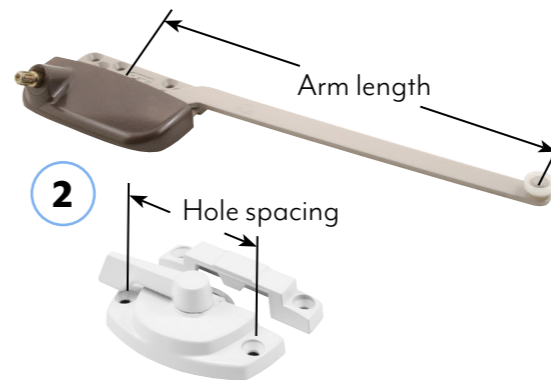
**Selection: Casement windows (Older systems use a steel frame).**

1. Crank handles can be replaced with original style or T-style cranks. Spindle diameter is the critical issue here. Amesbury Truth® use 11/32 in.
2. Operators and locks can be replaced easily on these. Arm length and hole spacing are needed to select the right operator. Newer style casements made of wood, fiberglass or vinyl use a newer system. These operators and locks can also be replaced easily but may require removal of some interior molding strips or operator covers.



1

Spindle diameter



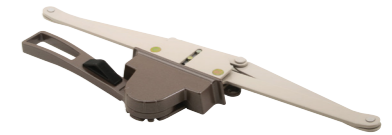
2

Hole spacing

Arm length



TH 23057  
Casement  
Locking Handle



TH 24096  
Awning Window Operator



TH 21937  
Operator Cover



EP 24043  
Casement Window Hinge

**Time required for installation:** 10 to 60 minutes for most replacements depending on the project.

**Tools required:** Phillips screwdrivers, straight slot screwdrivers, pliers or needle nose pliers, hammer, chisels, pry bar and dry film lubricant.

**Expected lifetime:** Window hardware life can vary widely. Generally if the item is properly installed, lubricated annually and cleaned, it will last for many years.

**Why buy:** Most purchases are the result of wear on hardware components or abuse. It is important to have a proper functioning window as it can lower heating and cooling costs. It will also allow for escape in an emergency and let in natural light further reducing electrical bills.

**Care and maintenance:** Operators should be lubricated with a spray grease or white grease on the gears. Do not use solvent-based lubricants.



## Section Table of Contents

[How To Use The Catalog](#)

[Awning Window Operator](#)

[Casement Window Operators](#)

[Operator Covers](#)

[Operator Handles](#)

[Window Hinges](#)

[Window Locks](#)

[Window Tracks](#)

Get the most out of your interactive catalog



**Truth Part Number:**  
Handle: 11573

Qty: 1

Diecast zinc, snap-on design, fits a 11/32 in. spindle.

- [TH 22134](#) (Bronze)     [TH 22142](#) (White)
- [TH 22135](#) (Coppertone)

Clickable hyperlink launches internet browser, opening a new web page that redirects to the product page on the Prime-Line website.

Toggle between photo and dimensioned line drawing of product.

Additional product specifications.

Installation instructions.\*

Where to buy the product.

**TH 22134 - Truth Tee Handle, Bronze, Snap-On Design, 1 per pkg.**

**DESCRIPTION**  
TH 22134 is a diecast Bronze Tee handle that fits 11/32 inch spindles found on Truth brand operators only. Ideal for low profile situations where the normal crank handle interferes with the window blinds, etc. The Snap-On design make it extremely easy to install. No set screw required.

- ◆ Diecast Construction
- ◆ BronzeFinish
- ◆ Tee Handle
- ◆ Fits 11/32 inch Spindles
- ◆ Snap-On Design
- ◆ Used on Truth Operators

|                     |                |
|---------------------|----------------|
| <b>Brand:</b>       | Amesbury Truth |
| <b>Material:</b>    | Diecast Zinc   |
| <b>Finish:</b>      | Painted        |
| <b>Color:</b>       | Bronze         |
| <b>Handle Type:</b> | T-Handle       |
| <b>Size:</b>        | 11/32"         |

Documents : TH 22134-INS.PDF

**WHERE TO BUY**

Shop. Learn. Improve.

**PRIME-LINE**  
26950 San Bernardino Ave Redlands, CA 92374  
800.255.3505

PRODUCT CATEGORIES | WHERE TO BUY | CATALOGS | HOW-TOS | ABOUT PRIME-LINE | PRODUCT RECALLS | SAFETY DATA SHEETS | CA PROPOSITION 65 | PRIVACY POLICY | CONTACT US | CAREERS | WARRANTY | SITEMAP

PRIME-LINE Products 2019. All Rights Reserved. Websites created and marketed by Single Throw Marketing.

Descriptive title.

In depth product description.

Additional bullet points.

\*Product page may not have this feature.

# AMESBURY TRUTH

## Awning & Casement Window Operators

**Regular handing:** When viewed from the inside, a regular handle will be pointed to the left when window is in the closed position.



**Truth Part Numbers:**  
Operator: 10.14  
Hook: 20008

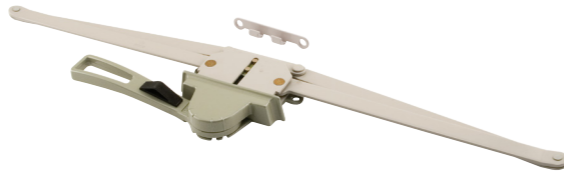
Qty: 1 set, with fasteners.

High pressure, corrosive resistant diecast zinc case and lever handle, baked enamel finish, holds window open in any of five positions.

**TH 24096** (Bronze)

**TH 24097** (White)

**Regular handing:** When viewed from the inside, a regular handle will be pointed to the left when window is in the closed position.



**Truth Part Numbers:**  
Operator: 10.10  
Hook: 20008

Qty: 1 set, with fasteners.

High pressure, corrosive resistant diecast zinc case and lever handle, baked enamel finish, holds window open in any of five positions.

**TH 23070** (Projection: under 2 in. – Bronze)

**TH 23072** (Projection: under 2 in. – Gold)

**TH 23069** (Projection: over 2 in. – Bronze)

**Regular handing:** When viewed from the inside, a regular handle will be pointed to the left when window is in the closed position.



**Truth Part Numbers:**  
Operator: 10.11  
Hook: 20008

Qty: 1 set, with fasteners.

High pressure, corrosive resistant diecast zinc case and lever handle, baked enamel finish, holds window open in any of five positions.

**TH 23097** (Bronze)

**TH 24079** (White)



**Truth Part Numbers:**  
Operator: 11.14  
Handle: 10579  
Hook: 20008

Qty: 1 set, with fasteners.

High pressure diecast zinc case and crank handle, baked enamel finish, hardened steel worm drive and gear arms.

**TH 24058** (Bronze)

**TH 24059** (White)



**Truth Part Numbers:**  
Operator: 11.10 (21-1/2 in.)  
11.12 (16-1/8 in.)  
Handle: 10579  
Hook: 20008

Qty: 1 set, with fasteners.

High pressure diecast zinc case and crank handle, baked enamel finish, hardened steel worm drive and gear arms.

**TH 23011** (Arm length: 16-1/8 in. – Bronze)

**TH 23012** (Arm length: 16-1/8 in. – Coppertone)

**TH 23013** (Arm length: 16-1/8 in. – White)

**TH 23008** (Arm length: 21-1/2 in. – Bronze)

**TH 23009** (Arm length: 21-1/2 in. – Coppertone)

**TH 23010** (Arm length: 21-1/2 in. – White)



**Truth Part Numbers:**  
Operator: 15.10  
Stud Bracket: 50.10.00.211 (Left hand)  
50.10.00.212 (Right hand)

Qty: 1 set, with fasteners.

High pressure diecast zinc case, baked enamel finish, hardened steel worm drive and gear arms, Encore series.

**TH 24225** (Left hand)

**TH 24226** (Right hand)



**Truth Part Numbers:**  
Operator:

Qty: 1 set, with fasteners.

High pressure diecast zinc case, baked enamel finish, hardened steel worm drive and gear arms, Encore series.

**TH 24234** (Left hand)

**Specify right or left hand**  
(Determined by the side hinge is on, when viewed from the **outside**.)



**Truth Part Numbers:**  
Operator: 15.18  
Handle: 11454

Qty: 1 set, with fasteners.

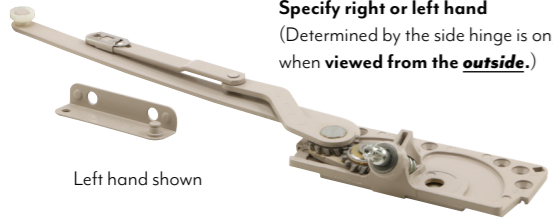
High pressure diecast zinc case and crank handle, baked enamel finish, hardened steel jointed arm, 90° window opening.

**TH 24174** (Bronze – Left hand)

**TH 24176** (White – Left hand)

**TH 24175** (Bronze – Right hand)

**TH 24177** (White – Right hand)



Left hand shown

**Specify right or left hand**  
(Determined by the side hinge is on, when viewed from the **outside**.)

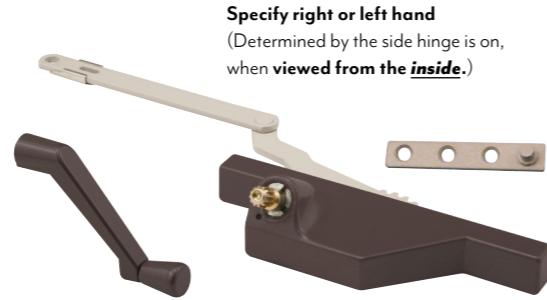


**Truth Part Numbers:**  
Operator: 15.10  
Stud Bracket: 10339 (Left hand)  
10340 (Right hand)

Qty: 1 set, with fasteners.

High pressure diecast zinc base, baked enamel finish, dual steel arms, hardened steel worm drive and gears, Entrygard series.

|                          | Handing | Arm Length | Link Offset |
|--------------------------|---------|------------|-------------|
| <a href="#">TH 24030</a> | Left    | 2-7/16 in. | Up          |
| <a href="#">TH 24032</a> | Left    | 3-5/16 in. | Up          |
| <a href="#">TH 23076</a> | Left    | 4-1/16 in. | Up          |
| <a href="#">TH 24031</a> | Right   | 2-7/16 in. | Up          |
| <a href="#">TH 24033</a> | Right   | 3-5/16 in. | Up          |
| <a href="#">TH 23077</a> | Right   | 4-1/16 in. | Up          |



Left hand shown

**Specify right or left hand**  
(Determined by the side hinge is on, when viewed from the **inside**.)



**Truth Part Numbers:**  
Operator: 23.46  
Stud Bracket: 10558  
Handle: 10579

Qty: 1 set, with fasteners.

High pressure diecast zinc base, baked enamel finish, hardened steel jointed arm, blind tap mounting holes.

|                          | Handing | Arm Length | Finish |
|--------------------------|---------|------------|--------|
| <a href="#">TH 23089</a> | Left    | 4-1/2 in.  | Bronze |
| <a href="#">TH 23091</a> | Left    | 4-1/2 in.  | White  |
| <a href="#">TH 23090</a> | Right   | 4-1/2 in.  | Bronze |
| <a href="#">TH 23092</a> | Right   | 4-1/2 in.  | White  |



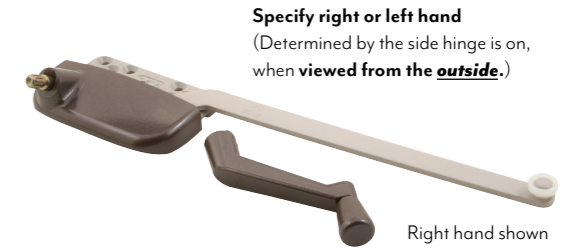
Right hand shown

**Specify right or left hand**  
(Determined by the side hinge is on, when viewed from the **outside**.)

Qty: 1 set, with fasteners.

High pressure diecast zinc case and crank handle, baked enamel finish, hardened steel arm, plastic roller, 90° window opening.

|                          | Arm Length | Handing | Finish     |
|--------------------------|------------|---------|------------|
| <a href="#">TH 23020</a> | 9-1/2 in.  | Left    | Bronze     |
| <a href="#">TH 23021</a> | 9-1/2 in.  | Left    | Coppertone |
| <a href="#">TH 23022</a> | 9-1/2 in.  | Left    | White      |
| <a href="#">TH 23023</a> | 9-1/2 in.  | Right   | Bronze     |
| <a href="#">TH 23024</a> | 9-1/2 in.  | Right   | Coppertone |
| <a href="#">TH 23025</a> | 9-1/2 in.  | Right   | White      |
| <a href="#">TH 23026</a> | 13-1/2 in. | Left    | Bronze     |
| <a href="#">TH 23027</a> | 13-1/2 in. | Left    | Coppertone |
| <a href="#">TH 23028</a> | 13-1/2 in. | Left    | White      |
| <a href="#">TH 23029</a> | 13-1/2 in. | Right   | Bronze     |
| <a href="#">TH 23030</a> | 13-1/2 in. | Right   | Coppertone |
| <a href="#">TH 23031</a> | 13-1/2 in. | Right   | White      |



Right hand shown

**Specify right or left hand**  
(Determined by the side hinge is on, when viewed from the **outside**.)



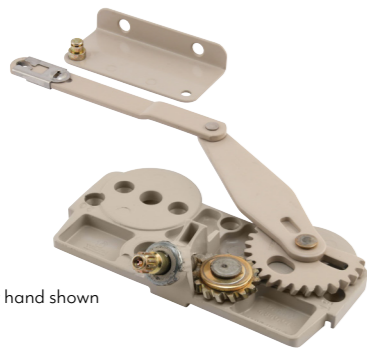
**Truth Part Numbers:**  
Operator: 15.31 (9-1/2 in.)  
15.32 (13-1/2 in.)  
Handle: 11454

Qty: 1 set, with fasteners.

High pressure diecast zinc case and crank handle, baked enamel finish, hardened steel arm, plastic roller, 90° window opening.

|                          | Arm Length | Handing | Finish |
|--------------------------|------------|---------|--------|
| <a href="#">TH 24182</a> | 9-1/2 in.  | Left    | Bronze |
| <a href="#">TH 24186</a> | 9-1/2 in.  | Left    | White  |
| <a href="#">TH 24183</a> | 9-1/2 in.  | Right   | Bronze |
| <a href="#">TH 24187</a> | 9-1/2 in.  | Right   | White  |
| <a href="#">TH 24191</a> | 9-1/2 in.  | Right   | Clay   |
| <a href="#">TH 24194</a> | 13-1/2 in. | Left    | Bronze |
| <a href="#">TH 24198</a> | 13-1/2 in. | Left    | White  |
| <a href="#">TH 24202</a> | 13-1/2 in. | Left    | Clay   |
| <a href="#">TH 24195</a> | 13-1/2 in. | Right   | Bronze |
| <a href="#">TH 24199</a> | 13-1/2 in. | Right   | White  |
| <a href="#">TH 24203</a> | 13-1/2 in. | Right   | Clay   |

**Specify right or left hand**  
(Determined by the side hinge is on, when viewed from the **outside**.)



Right hand shown

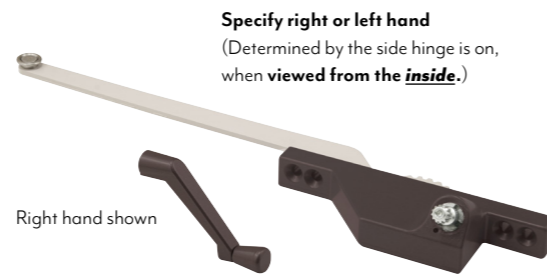


**Truth Part Numbers:**  
Operator: 15.11  
Stud Bracket: 10415 (Left hand)  
10416 (Right hand)

Qty: 1 set, with fasteners.

High pressure diecast zinc base, baked enamel finish, steel jointed arm, hardened steel worm drive and gears, Entrygard series.

[TH 23078](#) (Left hand)    [TH 23079](#) (Right hand)



Right hand shown

**Specify right or left hand**  
(Determined by the side hinge is on, when viewed from the **inside**.)



**Truth Part Numbers:**  
Operator: 23.10  
Handle: 10579

Qty: 1 set, with fasteners.

High pressure diecast zinc case and crank handle, baked enamel finish, hardened steel arm, stainless steel roller and rivet, 90° window opening.

[TH 23014](#) (Bronze – Left hand)  
[TH 23017](#) (Bronze – Right hand)  
[TH 23019](#) (White – Right hand)



**Truth Part Number:**  
Handle: 11573



Qty: 1

Diecast zinc, snap-on design, fits a 11/32 in. spindle.

- [TH 22134](#) (Bronze)      [TH 22142](#) (White)
- [TH 22135](#) (Coppertone)



**Truth Part Number:**  
Handle: 10579



Qty: 1

Diecast zinc, fits a 11/32 in. spindle.

- [TH 21996](#) (Bronze)      [TH 22007](#) (White)
- [TH 21998](#) (Coppertone)



**Truth Part Number:**  
Handle: 11454



Qty: 1

Diecast zinc, contour design, fits a 11/32 in. spindle, for the Maxim series operators.

- [TH 24028](#) (Bronze)      [TH 24026](#) (White)
- [TH 24029](#) (Coppertone)      [TH 24027](#) (Brite white)



**Truth Part Number:**  
Handle: 11329



Qty: 1

Diecast zinc, low profile when folded, fits a 11/32 in. spindle.

- [TH 22243](#) (Bronze)      [TH 22253](#) (White)
- [TH 22245](#) (Coppertone)      [TH 24224](#) (Brite white)



Folded position



Qty: 1 set.

Molded plastic cover, diecast crank, sleek nesting design, fits a 11/32 in. spindle, for the Entrygard series operators.

- [TH 24087](#) (Bronze)      [TH 24089](#) (Clay)
- [TH 24086](#) (White)

**Truth Part Numbers:**  
Handle: 10579  
Cover: 10341



Qty: 1 set.

Plastic cover, diecast zinc crank, fits a 11/32 in. spindle, for the Entrygard series operators.

- [TH 24000](#) (Bronze)      [TH 24034](#) (Clay)
- [TH 24003](#) (White)



Qty: 1

Diecast zinc, snap-on design, for the Entrygard series operators.

- [TH 22232](#) (Bronze)      [TH 22240](#) (White)

**Truth Part Number:**  
Cover: 11328



Qty: 1

Plastic, snap-on design, for the Entrygard series operators.

- [TH 21928](#) (Bronze)      [TH 21937](#) (White)

**Truth Part Number:**  
Cover: 10341



# AMESBURY TRUTH

## Cam Locks, Sash Locks & Window Tracks



**Truth Part Numbers:**  
Lock: 17.32 (7/16 in.)  
17.35 (11/16 in.)  
Keeper: 40967



Qty: 1 set, with fasteners.

High pressure-corrosive resistant diecast zinc, baked enamel finish, with alignment lugs, 2-1/16 in. hole spacing.

**TH 23084** (Bronze)  
**TH 23085** (White)



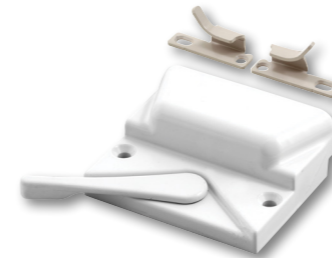
**Truth Part Numbers:**  
Lock: 16.18  
Keeper: 31344



Qty: 1 set, with fasteners.

High pressure diecast zinc case and handle, low profile, non-handed, 2 in. hole spacing.

**TH 23053** (Bronze) **TH 23056** (White)  
**TH 23054** (Coppertone)

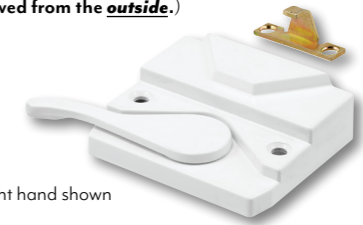


Qty: 1 set, with fasteners.

High pressure diecast zinc case and handle, non-handed, 2-3/8 in. hole spacing.

**TH 24153** (White)

**Truth Part Numbers:**  
Lock: 16.52  
Keeper: 41268 (Left hand)  
41269 (Right hand)



Right hand shown

Qty: 1 set, with fasteners.

High pressure diecast zinc case and handle, handed, 2-3/8 in. hole spacing.

**TH 23095** (Bronze – Left hand)  
**TH 23098** (White – Left hand)  
**TH 23096** (Bronze – Right hand)  
**TH 23099** (White – Right hand)

**Specify right or left hand**  
(Determined by the side hinge is on, when **viewed from the outside.**)

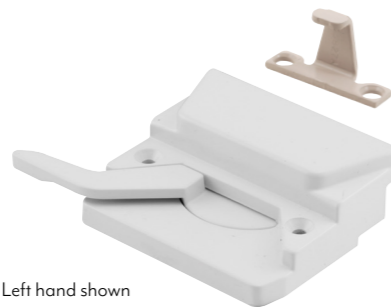
**Truth Part Numbers:**  
Lock: 16.27  
Keeper: 30827



Qty: 1 set, with fasteners.

High pressure diecast zinc case and handle, heavy duty, handed, 2-3/8 in. hole spacing.

**TH 23044** (Bronze – Left hand)  
**TH 23045** (Coppertone – Left hand)  
**TH 23047** (White – Left hand)  
**TH 23048** (Bronze – Right hand)  
**TH 23051** (White – Right hand)



Left hand shown

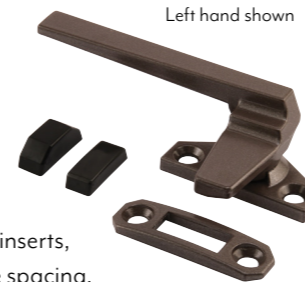
**Truth Part Numbers:**  
Handle: 25.29  
Strike housing: 20236  
Strike inserts: 20231 & 20233



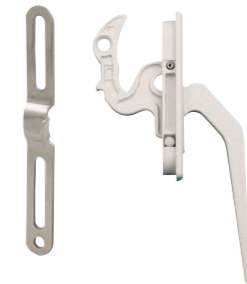
Qty: 1 set, with fasteners.

High pressure diecast zinc, 2 strike inserts, 90° rotation, handed, 1-1/2 in. hole spacing.

**TH 23057** (Bronze – Left hand)  
**TH 23059** (White – Left hand)  
**TH 23058** (Bronze – Right hand)  
**TH 23060** (White – Right hand)



Left hand shown



Qty: 1 set, with fasteners.

High pressure diecast zinc, non-handed, face mounted, 2-1/2 in. hole spacing.

**TH 23094** (White)

**Truth Part Numbers:**  
Handle: 24.25  
Keeper: 21088



**Truth Part Number:**  
Handle: 24.33



Qty: 1, with fasteners.

Diecast, multi-point actuator, blind tap 10-24 mounting, 3-13/16 in. hole spacing.

**TH 24014** (White) **TH 24015** (Brite white)



Qty: 1, with fasteners.

Steel, 7/8 in. hole spacing, use with low profile sash locks (TH 23053 thru TH 23056).

**EP 22499**

**Truth Part Number:**  
Keeper: 31344



Qty: 1, with fasteners.

Steel, for the Entrygard series operators.

**TH 22397** (11-3/8 in.) **EP 22374** (13-3/4 in.)  
**EP 22397** (11-3/8 in.)



**Truth Part Number:**  
Track: 30473

## Hinges



Qty: 1, with fasteners.

Stainless steel, heavy duty, non-handed, for emergency exit codes.

**EP 24050**

**Truth Part Number:**  
Hinge: 35.12



Qty: 1 pair, with fasteners.

Stainless steel track, plated steel sash and support arms, delrin shoe glide, left and right hand.

**TH 23088    EP 23088**

**Truth Part Number:**  
Hinge: 14.75



Qty: 1

Stainless steel, heavy duty, brass shoe, non-handed.

**EP 24043**

| Truth Part Number | Hinge Track Length |
|-------------------|--------------------|
| 34.24             | 10 in.             |



Qty: 1, with fasteners.

Zinc plated steel, brass shoe, adjustable tension.

**EP 24051**

| Truth Part Number | Hinge Track Length |
|-------------------|--------------------|
| 37.35             | 8 in.              |



Qty: 1 pair, with fasteners.

Steel track, acetal shoe guide with stainless steel insert, left and right hand.

**EP 23066**

| Truth Part Number | Hinge Track Length | Sash Height | Sash Weight |
|-------------------|--------------------|-------------|-------------|
| 13.15             | 18 in.             | 26 in.      | 38 lbs.     |

