



# Garage Door Replacement Hardware



## Who we are



Prime-Line Products has been supplying repair and replacement parts for windows and doors since 1978. Over 40 years of business acumen has led Prime-Line to the top of its trade. The worldwide need for residential maintenance has motivated our company to develop thousands of unique items for our customers. We service the professional trades with repair solutions throughout North America and abroad.

We also provide products to the Do-It-Yourself industry through home centers, hardware stores and lumber yards, with a wide variety of specialized repair parts that fit various individual and regional demands. We currently supply many manufacturers with OEM components that are in wide demand.

### How to Weigh a Door:

Garage door may be weighed by using a bathroom scale, as long as door weighs less than 300 lbs. Open door to its full open position. Block both bottom rollers in the track, using two "C" clamps or locking pliers. Release spring tension by disconnecting cable at overhead support bar on both sides. Remove the "C" clamps (or pliers) and allow door to lower onto the scale. Heavy doors may require two people to lower. (Example: a 150 lb. door needs two (2) 150 lb. springs; one on each side).

### Our value proposition

- Extensive product assortment
- Competitive wholesale pricing
- Largest selection of current and hard-to-find hardware
- In stock, ready to ship inventory
- Nationwide coverage
- Outstanding customer service
- Personalized account management
- State of the art ordering systems

### What we offer

- E-business capability
- In-house creative services available
- Shipping nationwide or international
- Engineering capability with 3-D rendering
- 3-D printer model making capability
- QC department and cycle testing
- Multiple roll-forming capabilities
- Metal fabrication shop

### How we can help

- Order fulfillment services include pick, pack and ship
- Order assembly and palletization
- EDI, ASN generation
- Prepacking & promotional packing
- Product storage & warehousing
- Inventory and labeling
- Cross-dock capabilities



### Customer Service

Prime-Line is ready to fulfill any large capacity order, we can take your order from inception to completion in stride. With customer service available from 6 A.M. to 5 P.M. PST every weekday, you'll get the answers you want, when you want them.

### For further information, please contact us directly:

26950 San Bernardino Ave.,  
Redlands, CA 92374  
800.255.3505  
[primeline.net](http://primeline.net)

# GARAGE DOOR

## Hardware



Keeping the hardware on your garage door in good condition ensures a long lasting and trouble free operation. We supply a complete line of garage door replacement parts & accessories that most often need replacing. Over 100 items are available to keep your door operating smoothly.

### Section Table of Contents

[How To Use The Catalog](#)

[Hinges](#)

[Bottom Seals](#)

[Latches](#)

[Brackets](#)

[Rollers](#)

[Cables](#)

[Stops](#)

[Extension Springs](#)

[Torsion Springs](#)

[Handles](#)

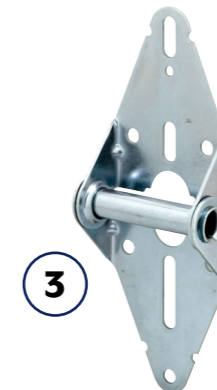
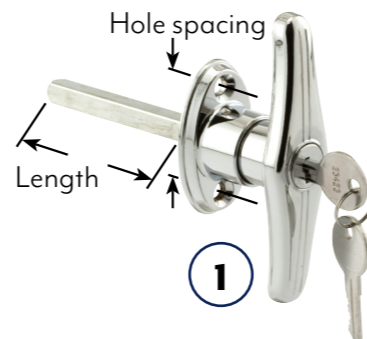


“Keeping the hardware on your garage door in good condition ensures long lasting and trouble free operation.”

**Uses:** There is a wide variety of door styles on the market and all require some type of hardware to function. Most of these hardware components wear out over time and require repair and replacement. It is important to have a properly functioning door for security and safety reasons.

#### Selection:

1. Review the handle for the spacing between the mounting holes and the shaft length.
2. Roller type, steel or plastic, and roller diameter are also important to ensure your door will operate properly.
3. Determine which hinge is needed by what position it mounts on the door. Bottom mount and center hinges are referred to as position #1.



GD 52100  
Extension Cable



GD 52108  
Pulley with Strap



GD 52112  
Roller



GD 52123  
Locking Handle

**Time required for installation:** 1 to 2 hours for most replacements.

**Tools required:** Pliers or needle nose pliers, hammer, ratchet with various socket sizes.

**Expected lifetime:** Garage door hardware life can vary widely. Generally, if the item is properly installed, lubricated annually and cleaned, it will last for many years.

**Why buy:** Most purchases are the result of wear on hardware components or abuse, such as the door rollers failing. This can cause the rollers to freeze and grind on the track. It is important to have a properly functioning door for security and safety reasons.

**Care and maintenance:** Lubricate moving parts; including cable with a lightweight oil twice a year; do not use grease. Keep the track area clean of dirt and debris.



Get the most out of your interactive catalog



Qty: 1

Galvanized steel, 14 gauge, 3 in. overall width, roller tube accepts a standard 7/16 in. O.D. stem roller.

- [GD 52104](#) (# 1 position & center)
- [GD 52105](#) (# 2 position)
- [GD 52106](#) (# 3 position)
- [GD 52107](#) (# 4 position)

Clickable hyperlink launches internet browser, opening a new web page that redirects to the product page on the Prime-Line website.

Toggle between photo and dimensioned line drawing of product.

Additional product specifications.

Installation instructions.\*

Where to buy the product.

The screenshot shows a web browser window displaying the Prime-Line website. The page title is "GD 52104 - Hinge (1# Position & Center)". The navigation menu includes HOME, PRODUCT CATEGORIES, WHERE TO BUY, CATALOGS, HOW-TOS, ABOUT PRIME-LINE, and CONTACT US. The breadcrumb trail is: Home > Repair/Replacement Parts > Exterior Door Hardware > Residential Garage Door Hardware > Hinges. The product image shows a photo and a dimensioned line drawing. The product title is "GD 52104 - Hinge (1# Position & Center)". The description reads: "Heavy duty 14 gauge galvanized steel hinge; roller tube accepts a standard 7/16\"

Descriptive title.

In depth product description.

Additional bullet points.

\*Product page may not have this feature.

# GARAGE DOOR

## Cables, Stops & Accessories



Qty: 2

Galvanized carbon steel, 12 ft. length.

**GD 52100** (1/8 in. cable)    **GD 52161** (5/32 in. cable)  
**GD 52101** (3/32 in. cable)



Qty: 2 sets

Galvanized carbon steel, 8 ft. 8 in. length, 1/8 in. O.D., with cable clamps.

**GD 52102**



Qty: 2

Galvanized carbon steel, 8 ft. 8 in. length, with stops.

**GD 52183** (1/8 in. cable)    **GD 52263** (3/32 in. cable)



Qty: 2

Galvanized carbon steel, 13 ft. 8 in. length, 1/8 in. O.D.

**GD 52262**



Qty: 2 sets.

Galvanized carbon steel, 12 ft. length, 3/32 in. O.D., with cable clamps and hooks.

**GD 52289**



Qty: 2 sets.

Extruded aluminum.

**GD 12149** (1/16 in.)    **GD 12152** (5/32 in.)  
**GD 12150** (3/32 in.)    **GD 12153** (3/16 in.)  
**GD 12151** (1/8 in.)    **GD 12154** (1/4 in.)



Qty: 20

Extruded aluminum.

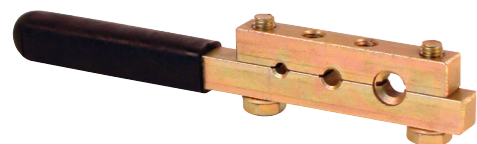
**GD 12180** (1/4 in.)



Qty: 2

Steel bolt and nut, cast aluminum housing.

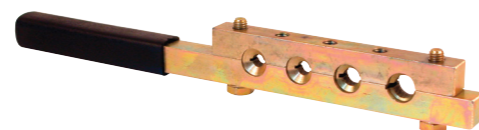
**GD 12251** (1/16 in.)    **GD 12253** (3/8 in.)  
**GD 12252** (5/16 in.)    **GD 12254** (1/2 in.)



Qty: 1

Steel, 2 piece, rubber covered handle.

**GD 52215** (1/16 in. - 1/8 in.)



Qty: 1

Steel, 2 piece, rubber covered handle.

**GD 52216** (1/8 in. - 1/4 in.)



Galvanized steel pulley and strap, case hardened steel race with steel ball bearing roller, center grooved.

- [GD 52109](#) (3 in. O.D. – Qty. 1 set)
- [GD 52189](#) (3 in. O.D. – Qty. 2 sets)
- [GD 52108](#) (4 in. O.D. – Qty. 1 set)



Steel ball bearing roller, steel inner race, 1-7/8 in. O.D., round edge, 7/16 in. O.D. stem.

- [GD 52110](#) (3-7/8 in. stem length – Qty. 2)
- [GD 52190](#) (4 in. stem length – Qty. 4)

Heavy duty steel ball bearing roller, steel inner race, round edge, 7/16 in. O.D. stem.

- [GD 52212](#) (4-3/8 in. stem length – Qty. 2)
- [GD 52111](#) (6-13/16 in. stem length – Qty. 1)



Qty: 2  
Plastic ball bearing roller, steel inner race, 1-7/8 in. O.D., round edge, 7/16 in. O.D. stem, 4-1/4 in. stem length.

[GD 52140](#)



Qty: 2  
Plastic roller, 1-7/8 in. O.D., round edge, 7/16 in. O.D. stem, 3-1/2 in. stem length.

[GD 52203](#)



Qty: 2  
Steel ball bearing roller, steel inner race, 1-5/16 in. O.D., flat edge, 5/16 in. O.D. stem, 2-7/8 in. stem length.

[GD 52112](#)



Qty: 2  
Steel ball bearing roller, steel inner race, 1-7/8 in. O.D., round edge, 5/16 in. O.D. stem, 4-1/2 in. stem length.

[GD 52113](#)



Qty: 1, with fasteners.  
Galvanized steel, 14 gauge, 3 in. overall width, roller tube accepts a standard 7/16 in. O.D. stem roller.

- [GD 52104](#) (#1 position & center)
- [GD 52105](#) (#2 position)
- [GD 52106](#) (#3 position)
- [GD 52107](#) (#4 position)



Qty: 1  
Galvanized steel, heavy duty.

[GD 52167](#)



Qty: 1, with fasteners.  
Galvanized steel, heavy duty, adjustable, roller tube accepts a standard 7/16 in. O.D. stem roller.

[GD 52117](#)

# GARAGE DOOR

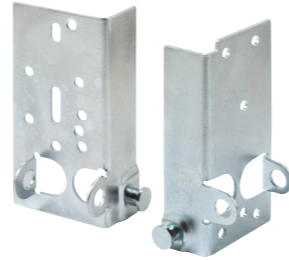
## Brackets, Handles & Latches



Qty: 1 set, with fasteners.

Steel, adjustable.

**GD 52220**



Qty: 1 set.

Galvanized steel, heavy duty, 13 gauge, roller tube accepts a standard 7/16 in. O.D. stem roller.

**GD 52197**



Diecast, keyed, 1-1/2 in. hole spacing, 5/16 in. square shaft, 3 in. long.

**GD 52122** (Chrome – Qty. 1 handle, 2 keys, with fasteners)

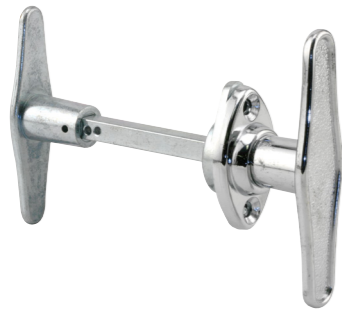
**GD 52200** (Chrome – Qty. 2 handles, 4 keys, with fasteners)



Qty: 1 handle, 2 keys, with fasteners.

Diecast, keyed, 1-1/2 in. hole spacing, 5/16 in. square shaft, 4-5/8 in. long.

**GD 52169** (Chrome)



Qty: 1, with fasteners.

Diecast, 1-1/2 in. hole spacing, 5/16 in. square shaft, 3 in. long.

**GD 52121** (Chrome)



Qty: 1 handle, 2 keys, with fasteners.

Diecast, keyed with break-off spindle, 4-1/4 in. hole spacing, 5/16 in. square shaft, 3-1/8 in. long.

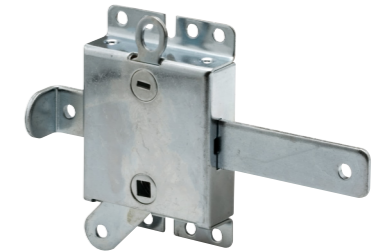
**GD 52147** (Chrome)



Qty: 1 handle, 2 keys, with fasteners.

Diecast, keyed, 1-3/4 in. hole spacing, 5/16 in. square shaft, 3 in. long.

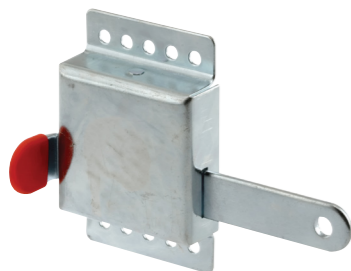
**GD 52123** (Chrome)



Qty: 1

Galvanized steel assembly, steel bolt, heavy duty, spring loaded.

**GD 52138**



Qty: 1, with fasteners.

Galvanized steel assembly, steel bolt, heavy duty.

**GD 52118**



Qty: 1, with fasteners.

Galvanized steel, heavy duty, accepts a 5/16 in. square shaft.

**GD 52120**



Qty: 1 set, with fasteners.

Heavy gauge steel, tamper-proof cover plate, with surface & mortise keepers.

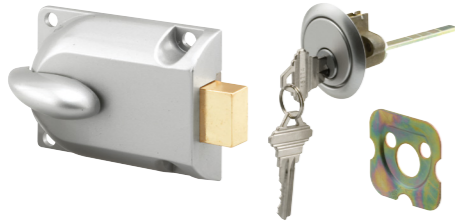
**GD 52241**



Qty: 1 set, with fasteners.

Heavy gauge steel, with surface mounted keeper.

**GD 52145**



Qty: 1 set, 2 keys, with fasteners.

Diecast assembly, heavy duty steel spring bolt, aluminum face key cylinder, 5 pin tumbler.

**GD 52119** (Aluminum)

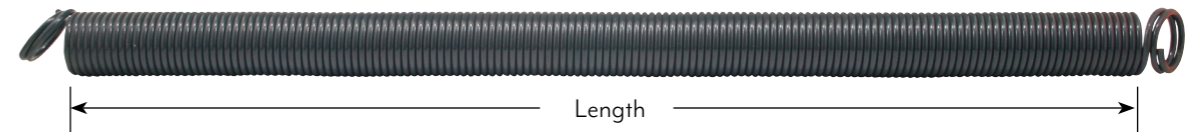
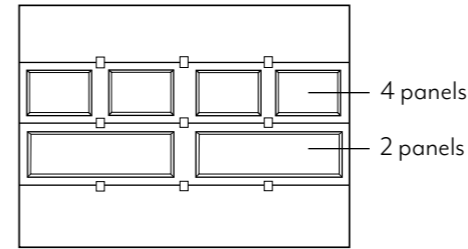


Qty: 1 lock, 2 keys, with fasteners.

Diecast, brass face, 5 pin tumbler.

**GD 52139**

4 section door



Qty: 1

Heavy duty, rated at 10,000 cycles, galvanized carbon steel cable, 8 ft. 8 in. length, 1/8 in. O.D.



Qty: 1 lock, 2 keys, with fasteners.

Plastic housing and faceplate, exterior mounted.

**GD 52142**



Qty: 1 lock, 2 keys, with fasteners.

Diecast, 36 in. cable.

**GD 52143** (Brushed chrome)



Qty: 1 set.

Double loop, 16 in. length, galvanized carbon steel cable, with cable clamps.

**GD 12270**

Spring Size	Color Code	Door Size	Springs On Door	Springs On Each Side
<b>GD 12279</b> 50 lbs. / 25 in. long	Orange	Use on single car fiberglass doors	2	1
<b>GD 12202</b> 70 lbs. / 25 in. long	Yellow	Use on single car fiberglass door	2	1
<b>GD 12311</b> 90 lbs. / 25 in. long	Light Blue	Use on 2 car metal doors	2	1
<b>GD 12191</b> 110 lbs. / 25 in. long	Blue	Wood door, 8 ft. wide x up to 6 ft. 6 in. high; 2 panels; 4 sections Fiberglass door, 16 ft. wide x up to 7 ft. high; 4 sections	2	1
<b>GD 12277</b> 110 lbs. / 29 in. long	Blue	Use on Taylor® doors; for 2 car metal doors	2	1
<b>GD 12192</b> 120 lbs. / 25 in. long	Green	Wood door, 8 ft. wide x up to 7 ft. high; 2 panels; 4 sections Fiberglass door, 16 ft. wide x up to 7 ft. high; 4 sections	2	1
<b>GD 12193</b> 130 lbs. / 25 in. long	Black	Wood door, 8 ft. wide x up to 7 ft. high; 4 panels; 4 sections	2	1
<b>GD 12194</b> 140 lbs. / 25 in. long	Red	Wood door, 9 ft. wide x up to 7 ft. high; 2 panels; 4 sections Wood door, 16 ft. wide x up to 7 ft. high; 2 panels; 4 sections	2 4	1 2
<b>GD 12195</b> 150 lbs. / 25 in. long	Silver	Wood Door, 9 ft. Wide x up to 7 ft. High; 4 Panels; 4 Sections Wood Door, 16 ft. Wide x up to 7 ft. High; 4 Panels; 4 Sections	2 4	1 2
<b>GD 12207</b> 150 lbs. / 22 in. long	Silver	9 ft. wide x up to 7 ft. high; 4 panels; 4 sections 16 ft. wide x up to 7 ft. high; 4 panels; 4 sections	2 4	1 2
<b>GD 12205</b> 160 lbs. / 25 in. long	Brown	Wood door, 9 ft. wide x up to 7 ft. high; 4 panels; 4 sections Wood door, 16 ft. wide x up to 7 ft. high; 4 panels; 4 sections	2 4	1 2
<b>GD 12267</b> 170 lbs. / 25 in. long	Yellow	Wood Door, 10 ft. wide x up to 7 ft. high; 4 panels; 4 sections Wood Door, 16 ft. wide x up to 7 ft. high; 8 panels; 4 sections	2 4	1 2
<b>GD 12278</b> 285 lbs. / 28 in. long	Orange	Use on 2 car wood doors	2	1



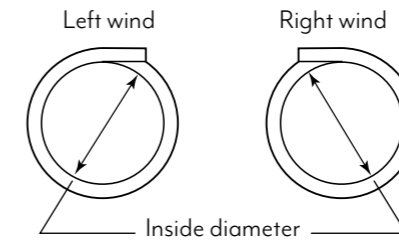
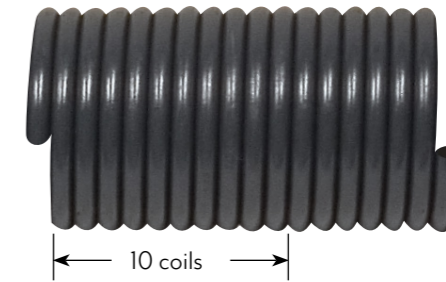
Qty: 1

Steel, heavy duty, with winding and anchor cone.

	Color Code	Wire Size	Inside Diameter	Overall Length	Wind
<a href="#">GD 12224</a>	Silver	.207	1-3/4 in.	18 in.	Right
<a href="#">GD 12225</a>	Silver	.207	1-3/4 in.	18 in.	Left
<a href="#">GD 12315</a>	Light Green	.207	2 in.	20 in.	Right
<a href="#">GD 12316</a>	Light Green	.207	2 in.	20 in.	Left
<a href="#">GD 12317</a>	Tan	.207	2 in.	22 in.	Right
<a href="#">GD 12226</a>	Blue	.218	1-3/4 in.	20 in.	Right
<a href="#">GD 12227</a>	Blue	.218	1-3/4 in.	20 in.	Left
<a href="#">GD 12319</a>	Light Blue	.218	2 in.	23 in.	Right
<a href="#">GD 12320</a>	Light Blue	.218	2 in.	23 in.	Left
<a href="#">GD 12308</a>	Orange	.218	2 in.	25 in.	Right
<a href="#">GD 12228</a>	Red	.243	1-3/4 in.	32 in.	Right
<a href="#">GD 12229</a>	Red	.243	1-3/4 in.	32 in.	Left
<a href="#">GD 12232</a>	Yellow	.243	2 in.	32 in.	Right
<a href="#">GD 12233</a>	Yellow	.243	2 in.	32 in.	Left
<a href="#">GD 12230</a>	White	.250	1-3/4 in.	32 in.	Right
<a href="#">GD 12231</a>	White	.250	1-3/4 in.	32 in.	Left
<a href="#">GD 12321</a>	Gold	.250	2 in.	28 in.	Right
<a href="#">GD 12322</a>	Gold	.250	2 in.	28 in.	Left
<a href="#">GD 12234</a>	Green	.250	2 in.	32 in.	Right
<a href="#">GD 12235</a>	Green	.250	2 in.	32 in.	Left

Measure 10 coils and refer to chart for wire size.

Wire Chart	Wire Size
	2-1/16 in. = .207
	2-3/16 in. = .218
	2-7/16 in. = .243
	2-1/2 in. = .250



Right hand shown

Qty: 1

Diecast, accepts cables up to 1/8 in. O.D., max weight load of 265 lbs.

[GD 12222](#) (Left hand)    [GD 12223](#) (Right hand)



Qty: 2

Hard drawn wire, 1/2 in. O.D. x 16 in. long.

[GD 52238](#)

# GARAGE DOOR

## Accessories & Bottom Seals



Qty: 1, with nails.

Vinyl, fits standard 1-3/8 in. thick wood doors.

**GD 12290** (10 ft.)



Qty: 1

Vinyl, fits on fiberglass and metal doors.

**GD 12294** (16 ft.)



Vinyl, fits on fiberglass and metal doors.

**CCGD 12127** (9 ft. – Qty. 6 in cut case box)

**CCGD 12128** (16 ft. – Qty. 6 in cut case box)



Qty: 1, with fasteners.

Bright yellow rubber ball, 21 ft. nylon cord, contacts windshield when parking car in garage.

**GD 52286**



Qty: 2, with fasteners.

Galvanized steel.

**GD 52129** (5 in. hole spacing) **GD 52130** (6 in. hole spacing)



Qty: 12, with nuts.

Zinc plated, 1/4 in.-20 x 1-7/8 in.

**GD 52103**